

TURNER
IMAGING SYSTEMS

PRECISION IN YOUR HANDS:

SMART  for in-clinic
diagnostics and procedures



SWISSRAY 
TECHNOLOGIES

A GAME-CHANGER FOR CLINICAL EFFICIENCY AND PATIENT CARE

In the clinic, meet, image, and treat the patient without leaving the room; enhancing the doctor-patient relationship and creating opportunities for clinical efficiency. Stress views, perfect alignment, and imaging of complex anatomy is achieved at the point of care with the SMART-C®.

Get precise imaging to deliver precise care to your patient. Procedures that were once exclusively performed in the operating room can now be conducted in the clinic. The SMART-C® offers diagnostic, intra-operative, and post-surgical imaging in patient and procedure rooms. Improve scheduling, convenience, and economics by taking control and doing more in the clinic.

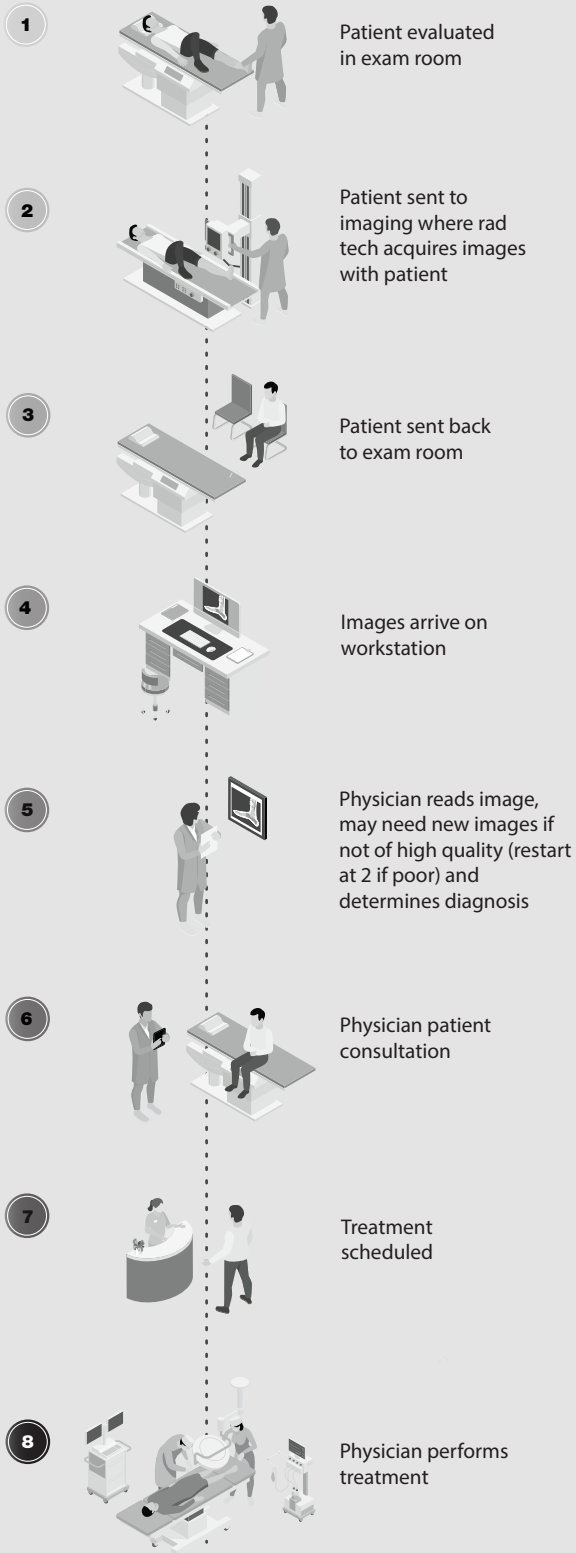
SMART-C® allows for more diagnostics and procedures within the clinic:

- ✓ Radiographic and Fluoroscopic imaging
- ✓ Image guided injections
- ✓ Weight bearing studies
- ✓ Reductions and internal
- ✓ Stress views
- ✓ Pin insertion and removal

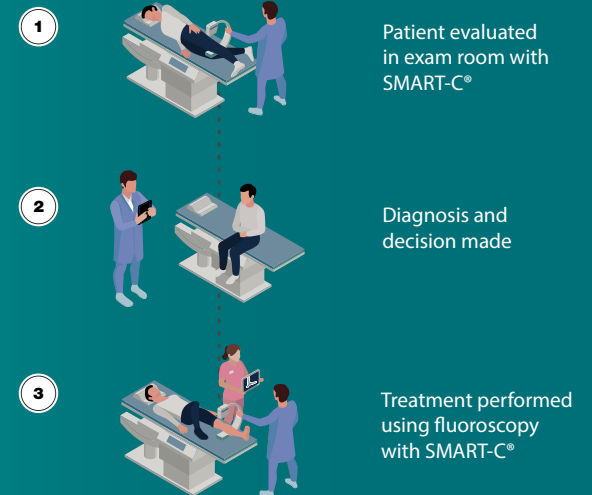


NEW WORKFLOW WITH SMART-C®

OLD WORKFLOW



NEW WORKFLOW SMART-C®



PHYSICIAN:

- ✓ **Don't wait for radiology:** Take control for precise and efficient imaging that leads to fast and accurate patient care.
- ✓ **Reduces referrals and rescheduling:** Onsite fluoroscopic imaging eliminates the necessity to send patients to another facility for imaging studies and minimally invasive procedures.
- ✓ **Comprehensive care:** Offer a one-stop solution for in-clinic imaging and minimally invasive procedures.

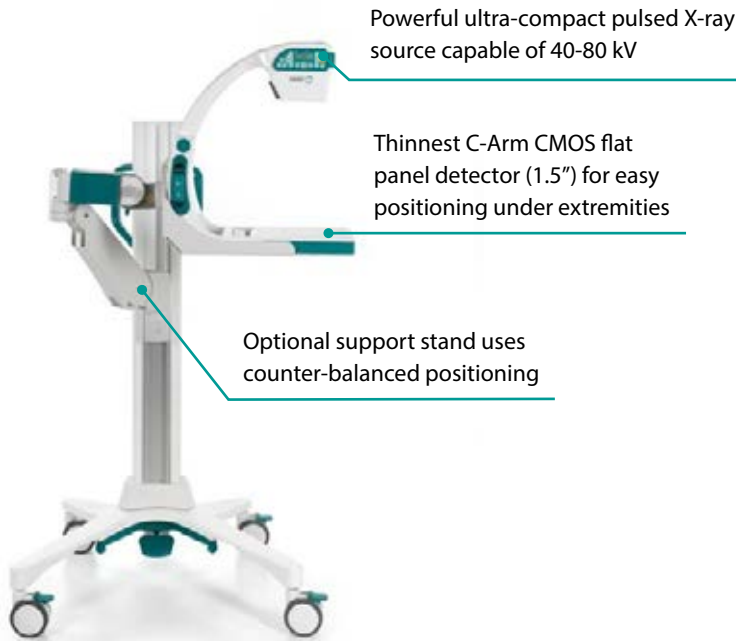
PATIENT:

- ✓ **Convenience:** No waiting for imaging and the option of procedures performed in clinic.
- ✓ **Time and cost savings:** Bypass radiology and the ASC for quick recovery and less expense.
- ✓ **Improved interaction:** A more personal experience with physician acquired imaging.

DESIGNED FOR MODULARITY AND EFFICIENCY

SMART-C® ACCESSORIES:

SUPPORT STAND



Powerful ultra-compact pulsed X-ray source capable of 40-80 kV

Thinnest C-Arm CMOS flat panel detector (1.5") for easy positioning under extremities

Optional support stand uses counter-balanced positioning

MONITOR CART

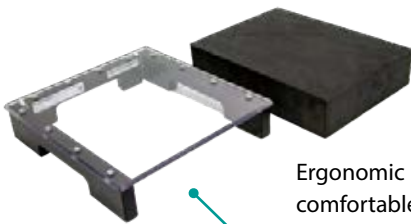


23" touch-screen color LCD monitor

Docking station for tablet

Trolley, very easy to move with breaks

WEIGHT BEARING STAND



Ergonomic platform provides a comfortable and secure stand for patients during weight-bearing imaging

RUGGED TRANSPORT CASE



Rugged transport case protects system during transport and storage. Fully loaded case weighs under 50 lbs

Collapsible frame for ease of transport and storage

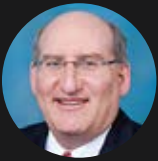
CUSTOM DRAPES



Custom drapes designed for SMART-C®, tablet and support stand, ensuring complete coverage during procedures.

BALTIMORE SINAI PEDIATRIC FRACTURE CLINIC IMPROVED PATIENT CARE AND WORKFLOW WITH SMART-C®

The Rubin Institute for Advanced Orthopedics at Sinai Hospital of Baltimore runs a pediatric orthopedic and fracture clinic staffed by renowned pediatric orthopedic surgeons Dr. Philip McClure and Dr. John Herzenberg. The practice ranges from simple kid's fractures to complex congenital anomalies.



**LIFEBRIDGE
HEALTH**
Rubin Institute for
Advanced Orthopedics

“If you’re really interested in quality, then you need absolute control of the x-ray imaging. That is what you have with SMART-C®”
Dr. Herzenberg

The Challenge: Navigating Patient Care Without Fluoroscopy

Like most offices, the doctors generally rely on time-consuming X-ray imaging provided in a dedicated suite that is managed by an independent radiology organization. Orders for imaging of complex and often-times deformed anatomy were carried out by radiological technicians using standard imaging equipment. In many cases, the resulting images were often less than ideal, leaving the doctor with two options: 1) send the patient back for additional imaging and further instructions to the rad-tech or 2) accept an image that was positioned imperfectly. With option 1, time is lost and there is no guarantee that follow-up images will be satisfactory; with option 2, the recommended treatment may not have the desired accuracy.

From Challenge to Triumph

In response to these challenges, the Baltimore Sinai Fracture Clinic made the strategic decision to invest in a SMART-C®. Since the implementation of the SMART-C®, the clinic has witnessed a significant transformation in their workflow and patient care, including:

- Expansion of in-clinic capabilities, including stress views.
- Increased ability to do joint injections, with greater accuracy.
- Physician-controlled imaging of certain joints (elbow, wrist, ankle) for immediate and perfectly aligned images.
- Point of care for efficient patient workflow.
- Consistent and high-quality imaging for accurate diagnoses and treatment planning

Building Bridges of Trust: Strengthening Physician-Patient Relationships

The implementation of SMART-C® has positively impacted patient-physician relationships. While patients appreciate the convenience of having their X-rays performed at the clinic during their visit, Dr. Herzenberg has also noticed a more engaged and collaborative approach with his patients and caregivers, as he can now show them their fluoroscopic X-rays in real-time and involve them in the treatment planning process.

TURNER
IMAGING SYSTEMS



CE

FDA Cleared

US and foreign patents pending
Follow IFU Safeguards

Turner Imaging Systems Inc.
1119 S 1680 W,
Orem, UT 84058

info@turnerxray.com
www.turnerxray.com
+1 866 870 2022

rev # 710-00017 A

Swissray Technologies AG

Turbistrasse 25
6280 Hochdorf, Switzerland (CH)
Phone: +41 (41) 914 12 12

info@swissray-technologies.com
www.swissray-technologies.com

SHM_700_001_02_EN 05/24

SWISSRAY 
TECHNOLOGIES